

Linux kernel

functionalities layers

human interface

system

processing

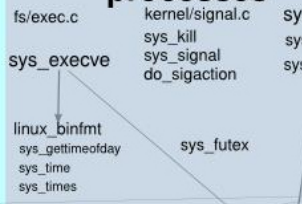
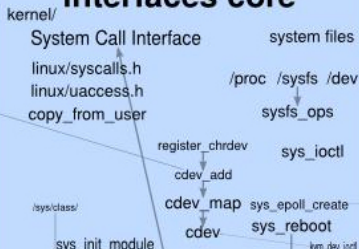
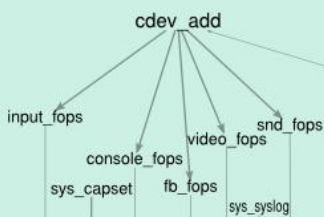
user space interfaces

HI char devices

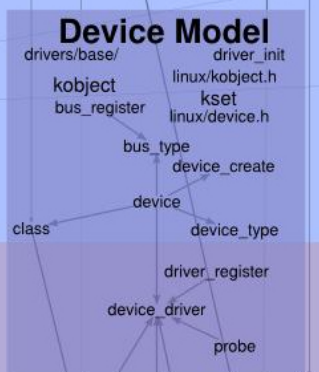
interfaces core

processes

system calls and system files



virtual



bridges

cross-functional modules



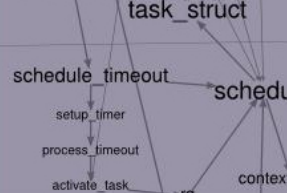
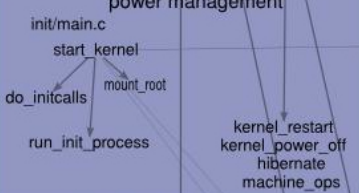
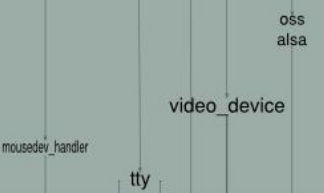
logical

functions implementations

HI subsystems

system run

Scheduler

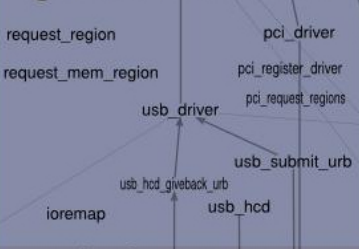


device control

abstract devices and HID class drivers

generic HW access

interrupts core



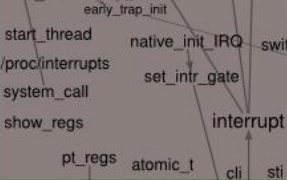
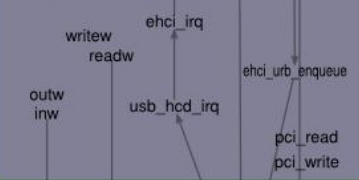
hardware interfaces

drivers, registers and interrupts

HI peripherals device drivers

device access and bus drivers

CPU specific



electronics

user peripherals

I/O

CPU



